



2022

2012  
2022

11

02  
04  
16  
20

2022 1 1 2022 12 31

1

24

2

38

26  
32  
36

40  
42  
44

3

46

4

58

48  
50  
54

60  
62  
66

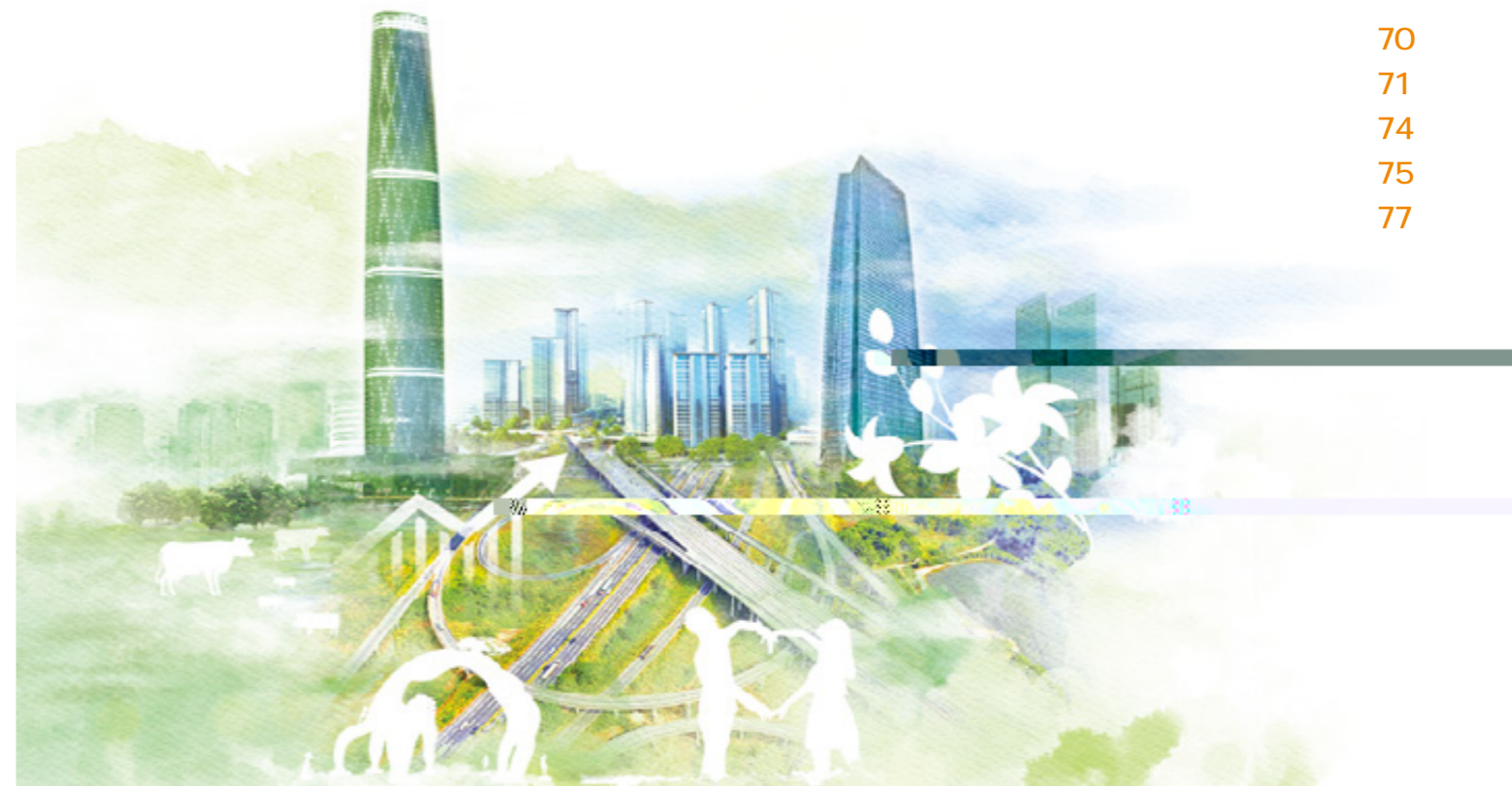
GRI

GRI Standards  
CASS-CSR4.0

70  
71  
74  
75  
77

<http://www.yuexiu.com/shzr/shehuizerenbaogao/>

8620 88836888



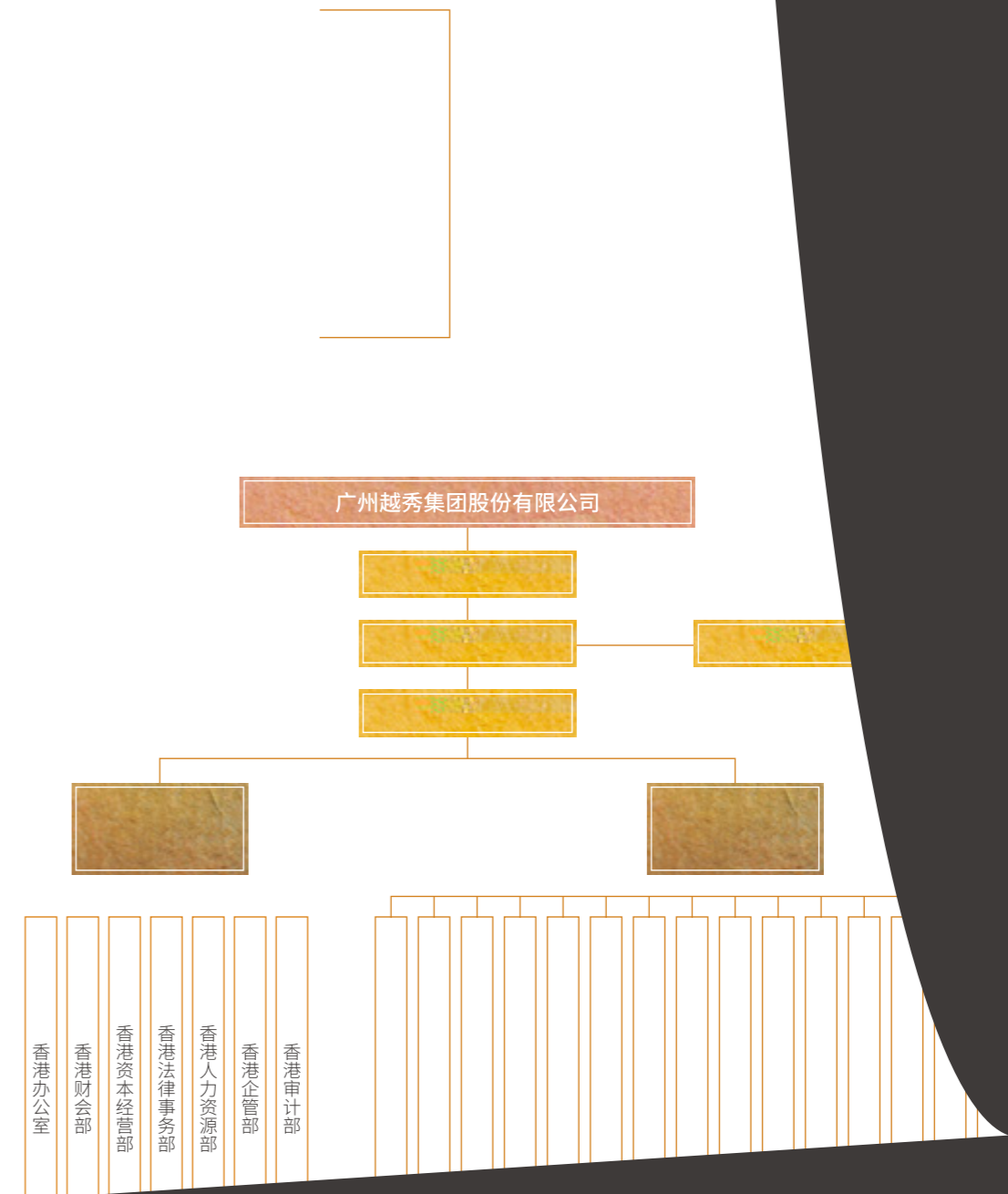
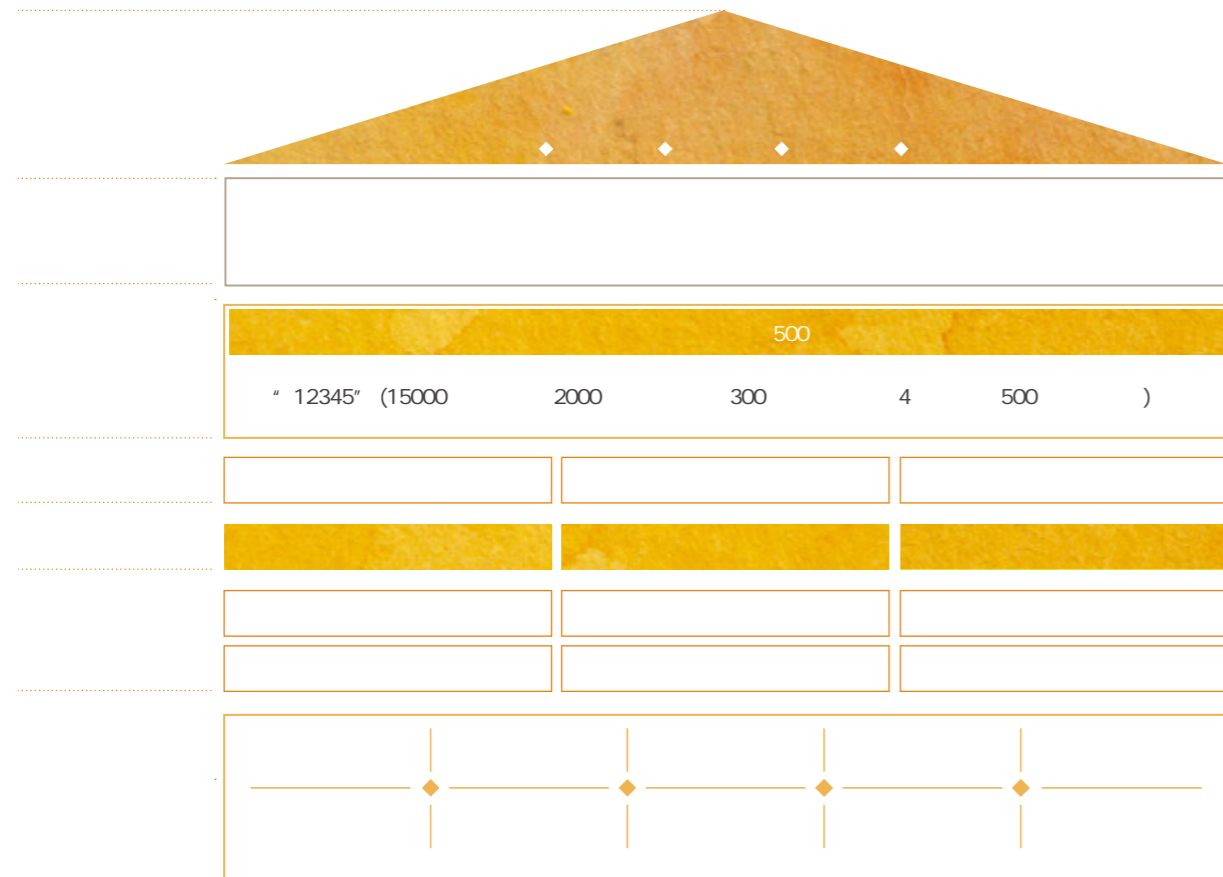


1985

38

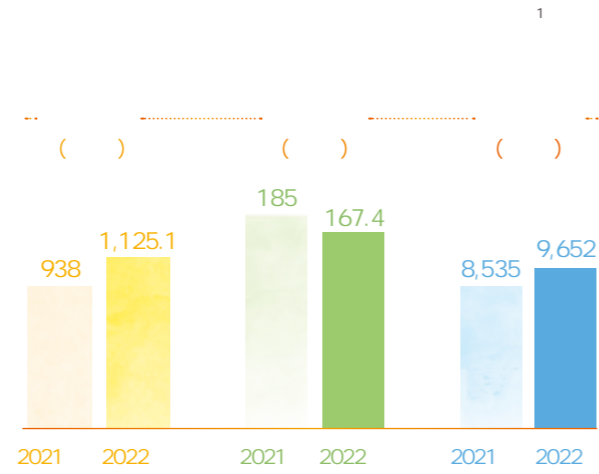
" 4+X"

REIT 6





# 2022



# 4

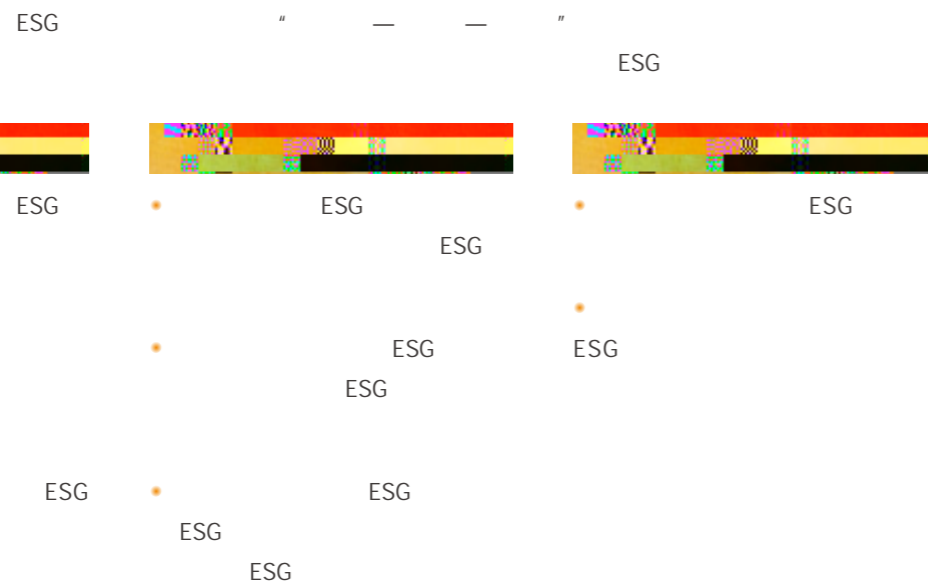
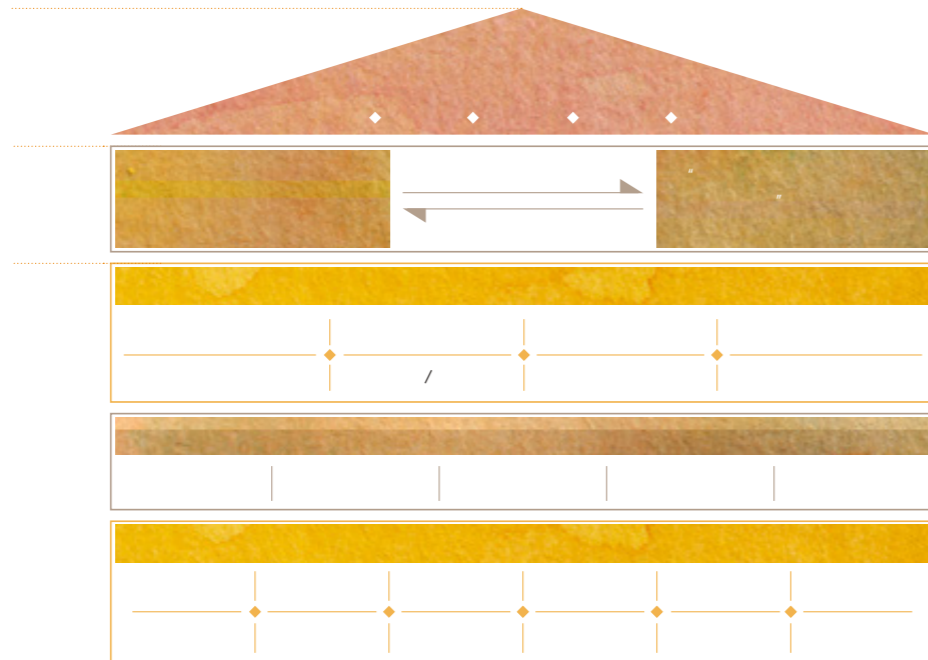


2022

2022



# ESG



ESG

ESG  
2022

ESG

2022

ESG



ESG  
2022 34



ESG  
ESG A ESG





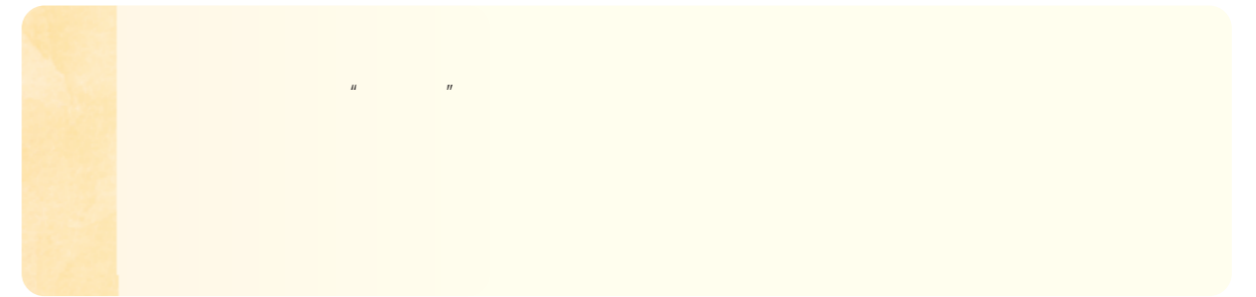
100%

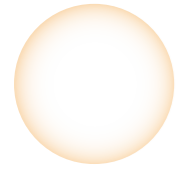






" 4+X"





“ + ”



2022

“ — — ”

/					
/					

8 3 17.5 102  
 7 1  
 32  
 108  
 2022 8 10 6%  
 3,000





8

11

2022  
8

" + "

1.2

2022

" "

20

1,000

8

1.43

300

2030

SDGs

4

优质教育



5

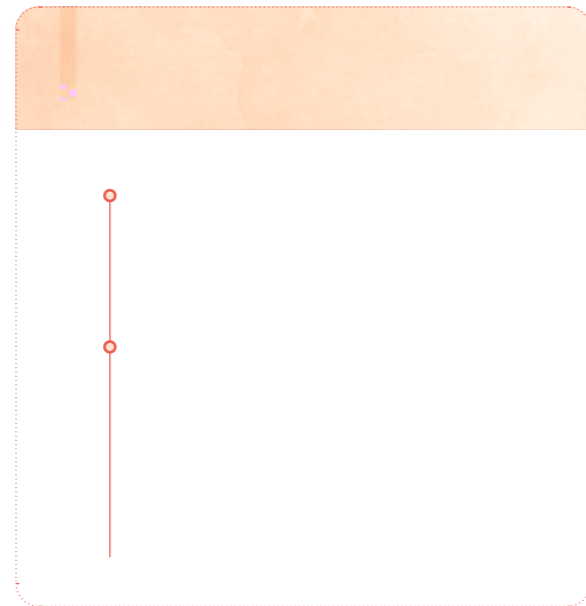
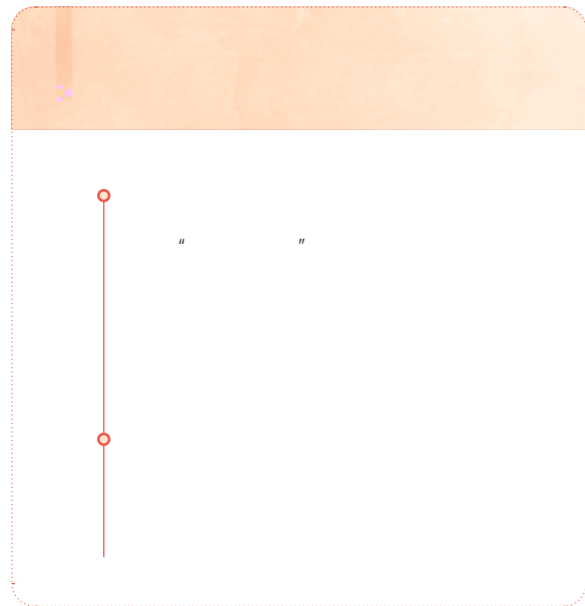
性别平等



8

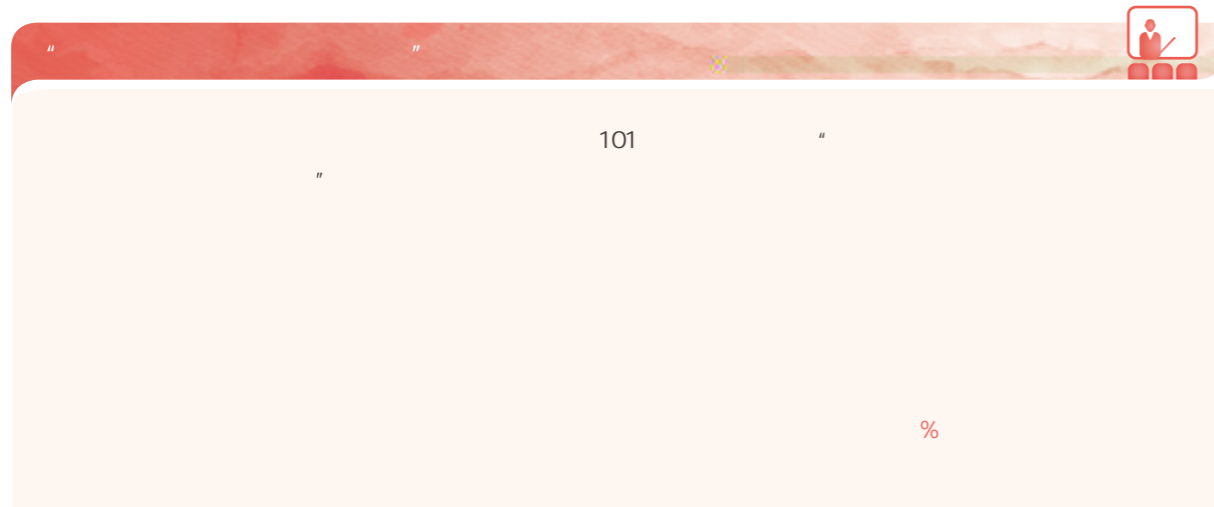
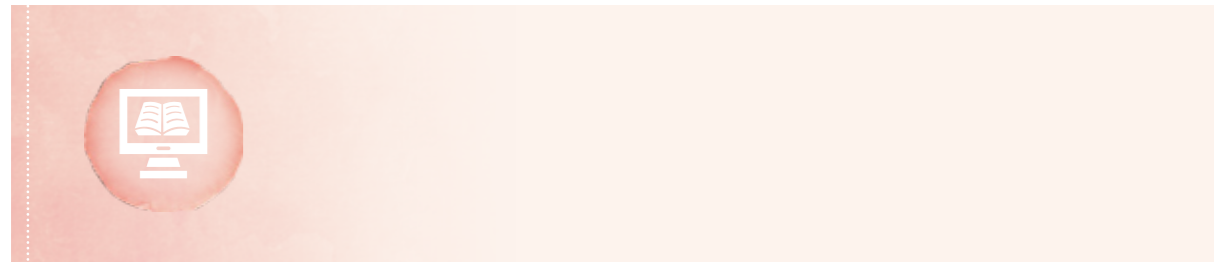
体面工作和





2022 10 25



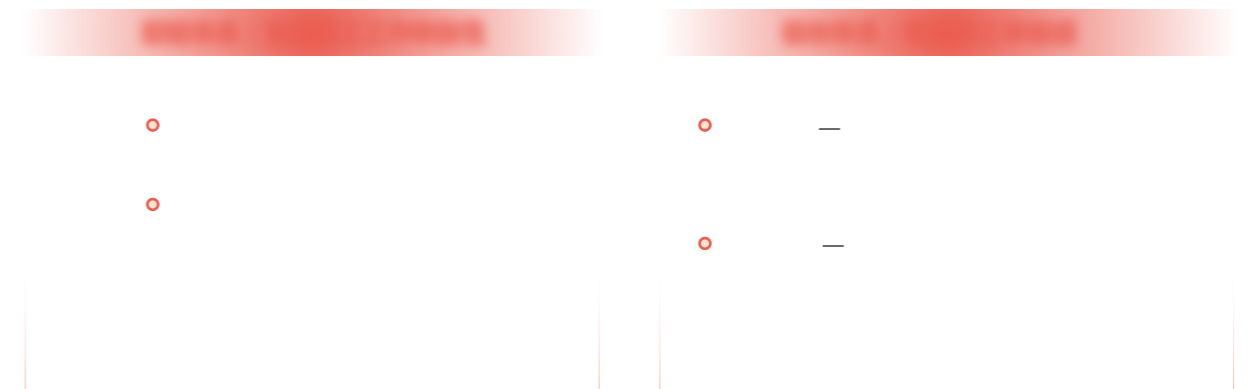
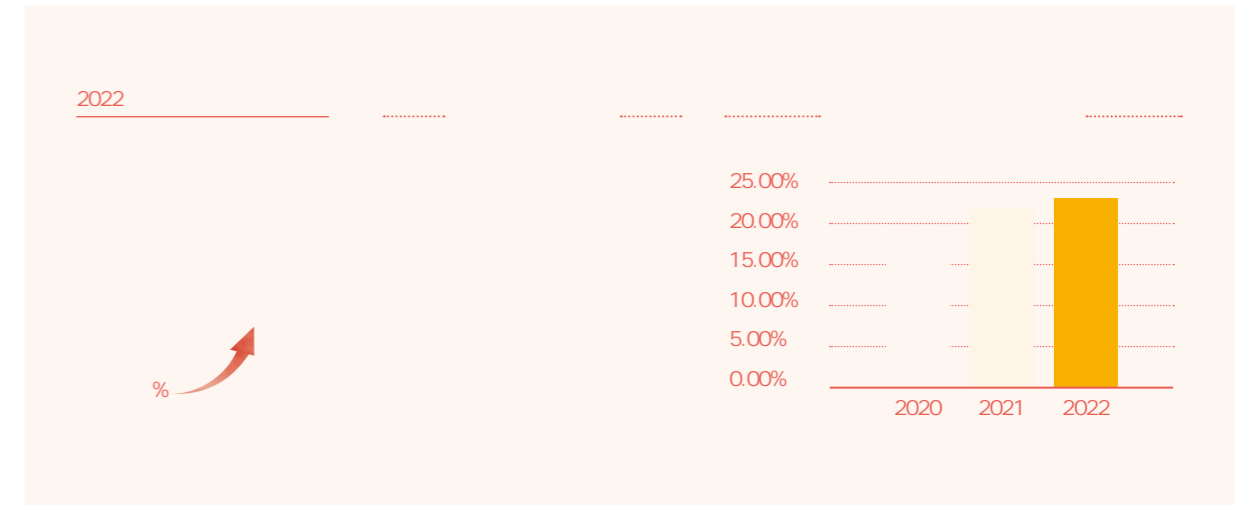


" 2022

" 2022

56%

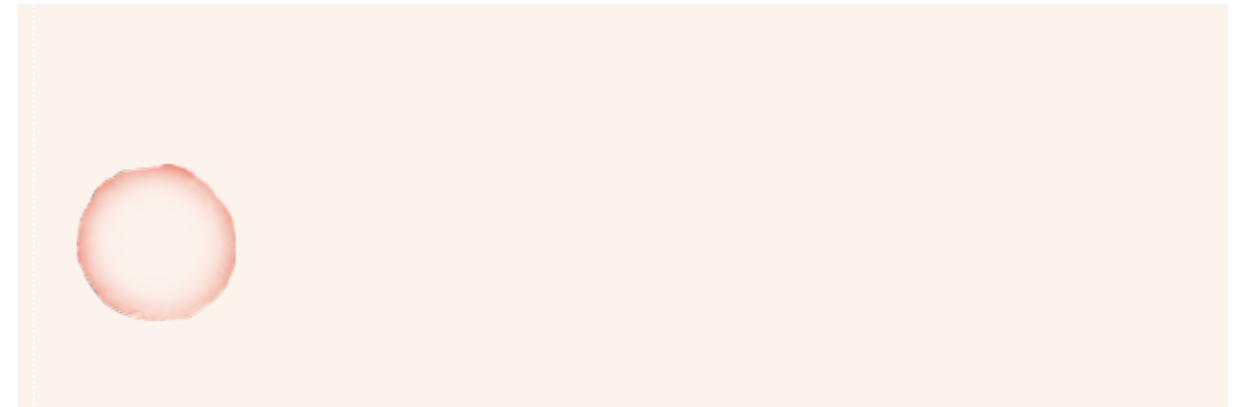
2022



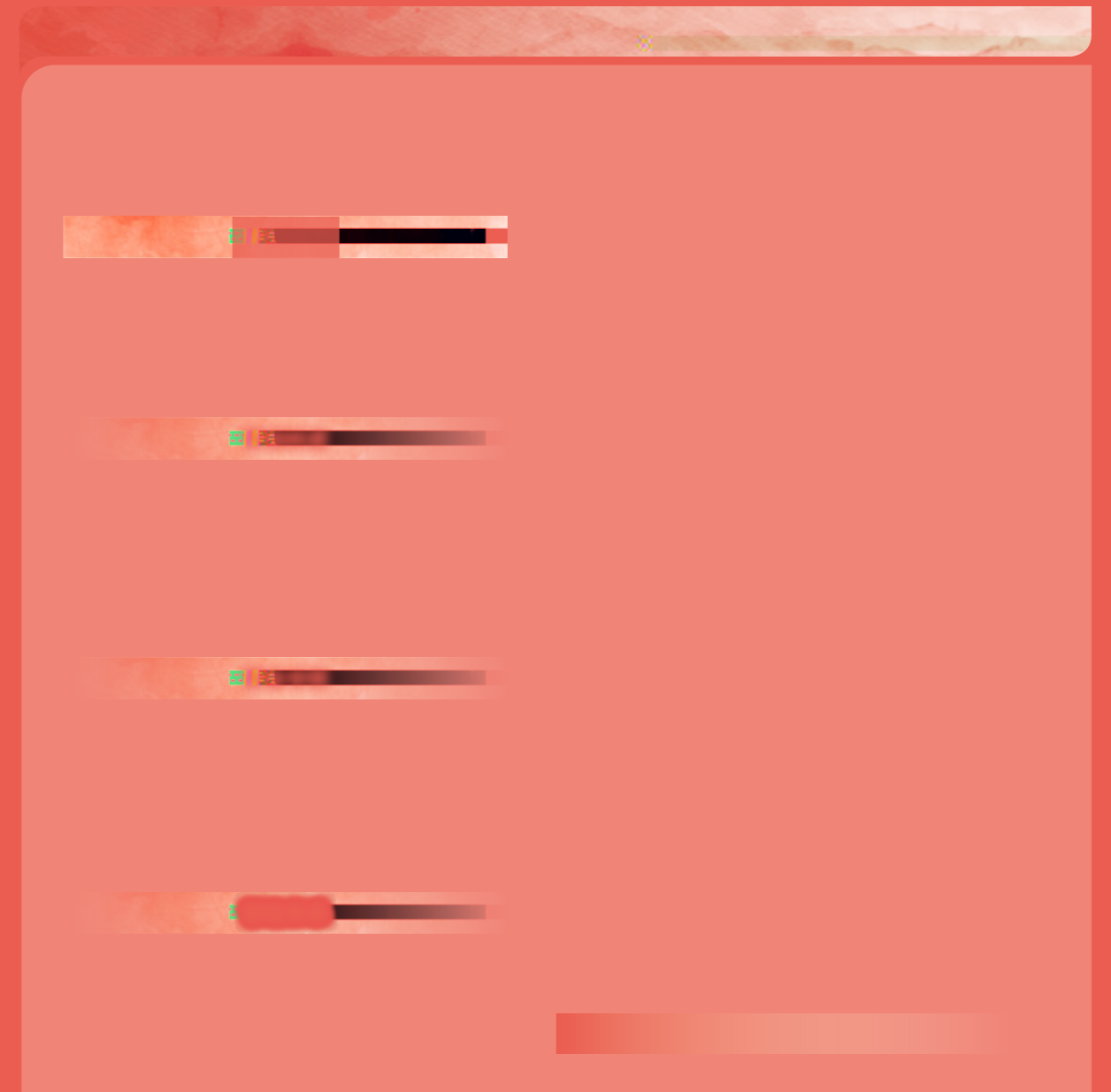
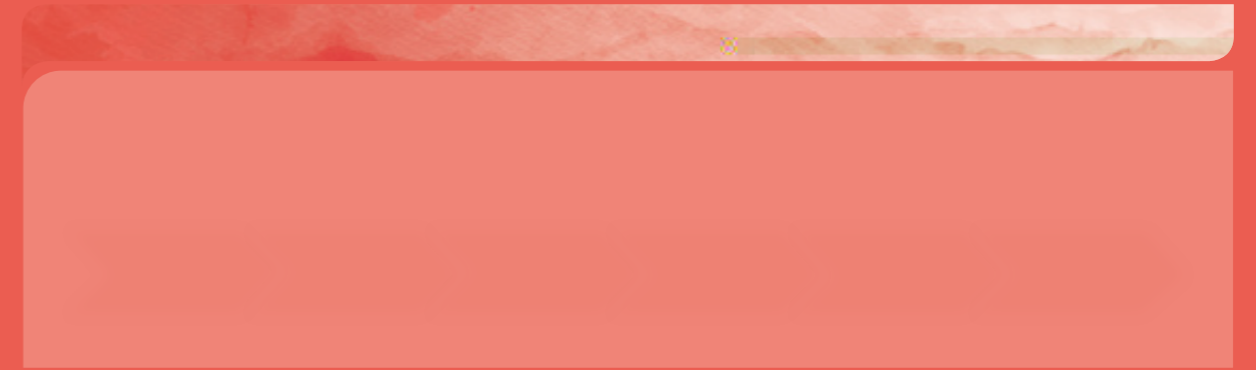
" " 2022

" "

" " " "









500



%

93%

TOD TOD

1.0 " +

"TOD5.0

" " " " "

" " " " "

REITS 3

REIT

" " 400

" " "

3 4 10



3 良好  
健康与福祉

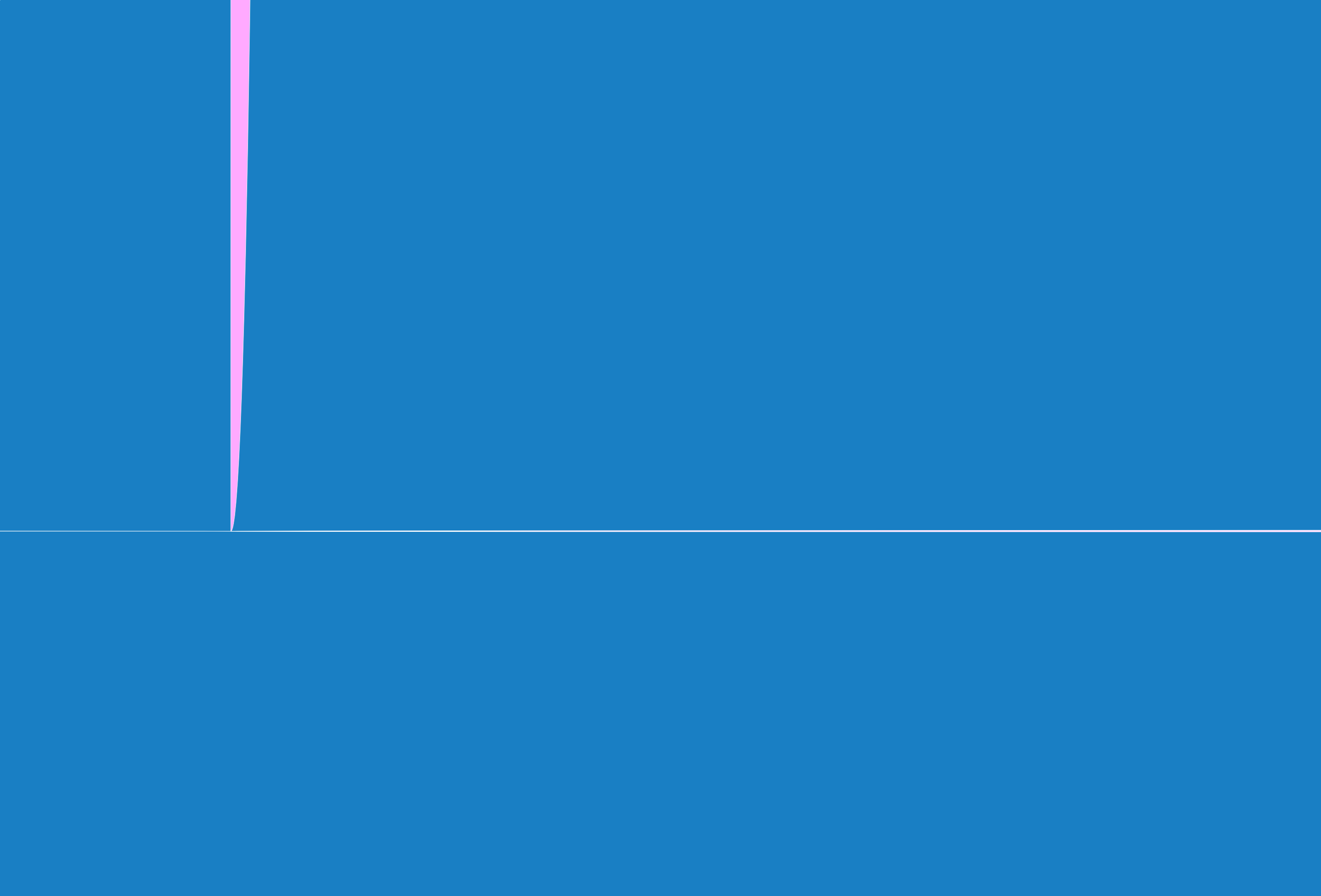


8 体面工作和  
经济增长



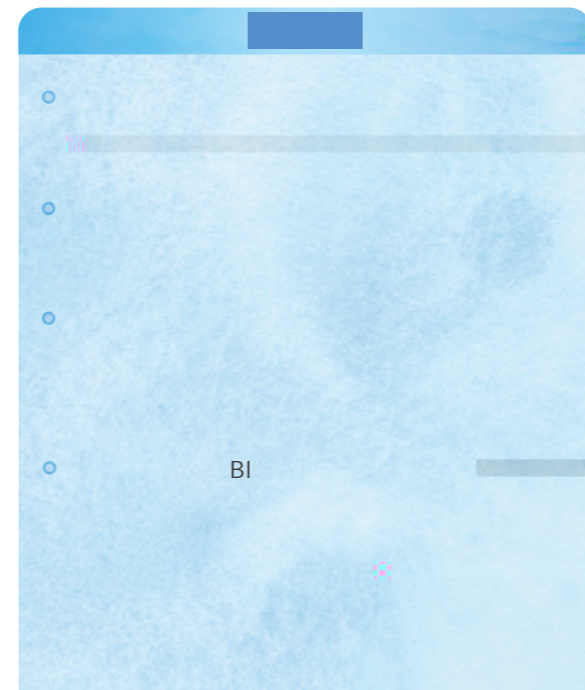
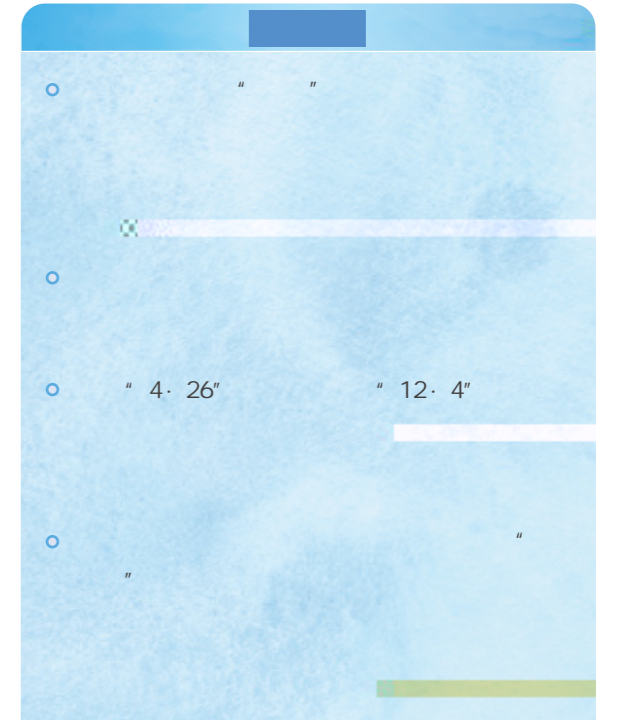
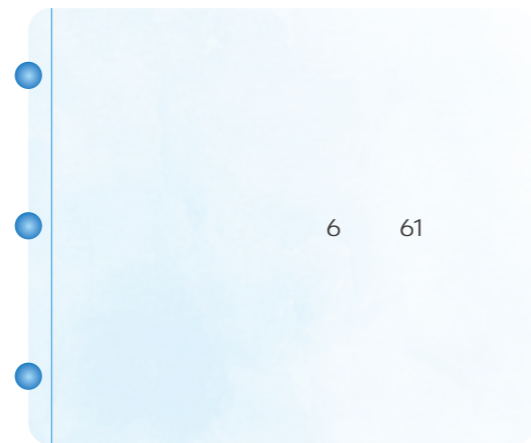
9 产业、创新和  
基础





2022 " " " "

" "



•

“

”

TOD

“

+

”

+

+

+

”

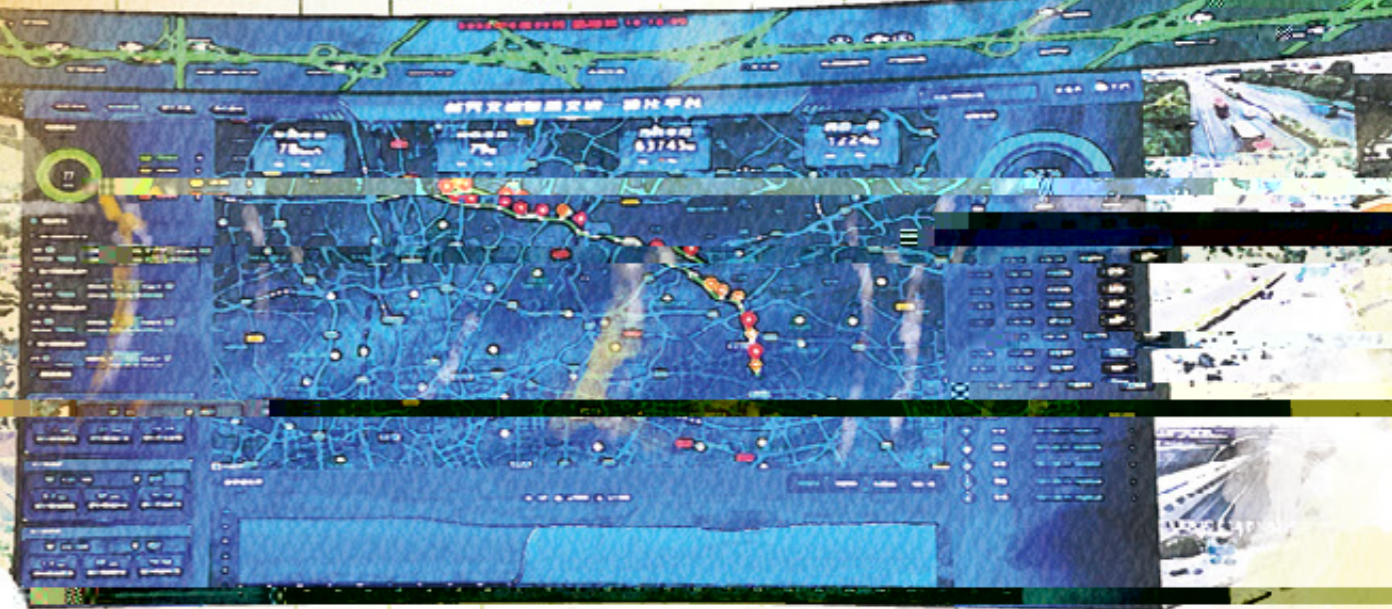
”

”

“

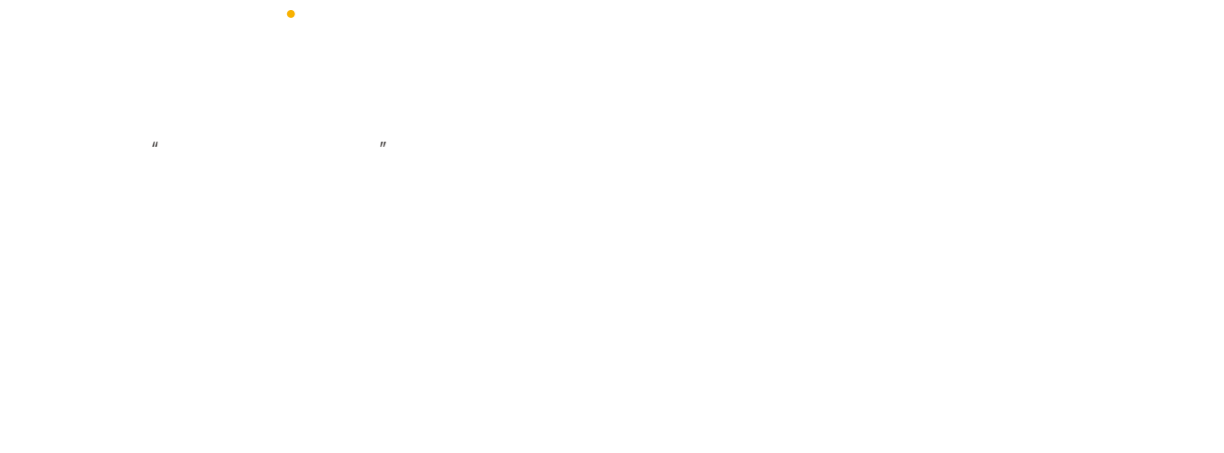
”

# 北二环智慧营运监控中心



8 体面工作和  
经济增长





" " AI

AI — " " AI

" " AI

2021 10

38-60 / 2

OCC

2022

" 2025"

ISO " " "

" " " "

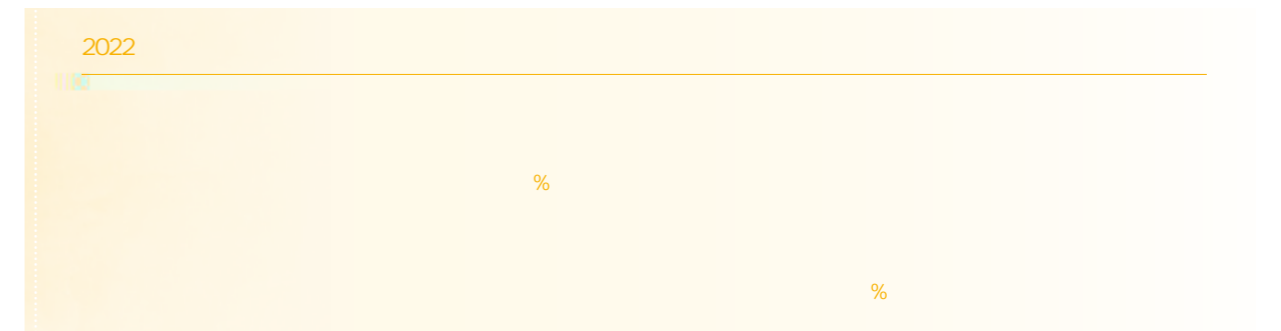
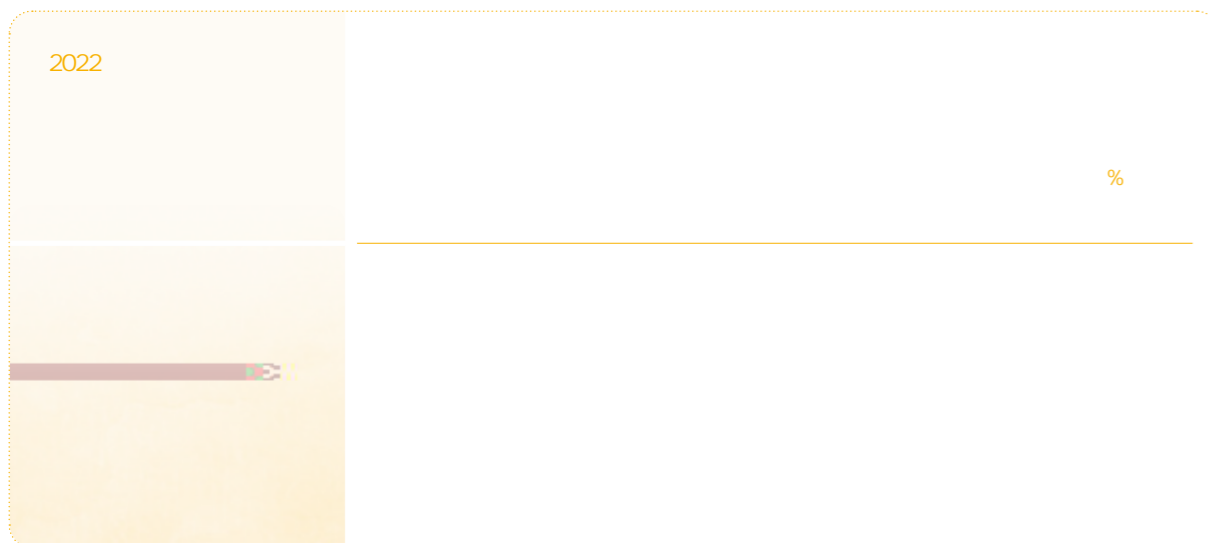
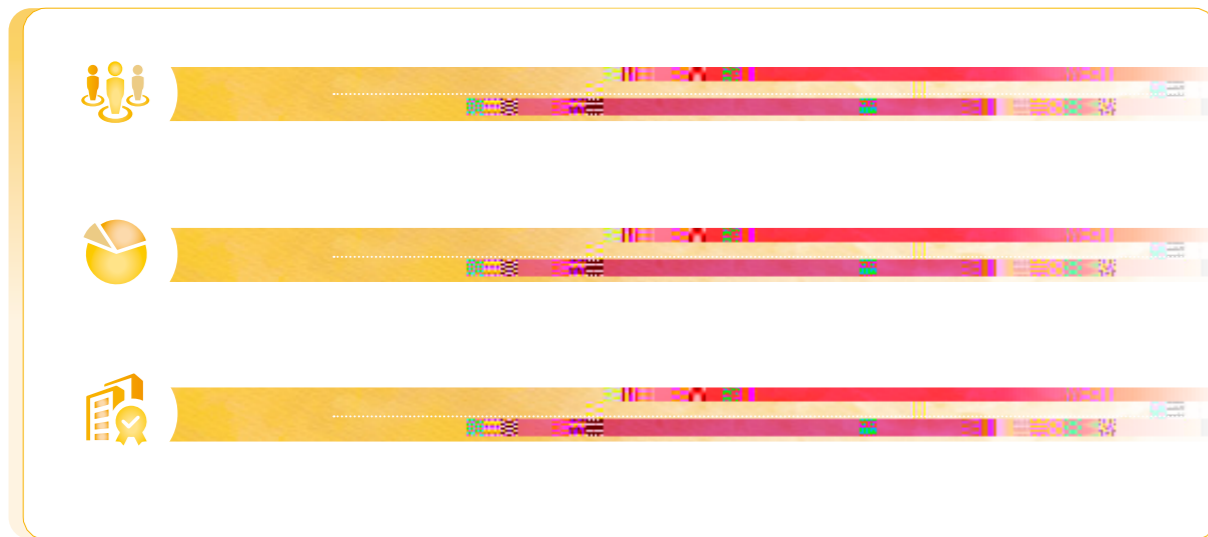
VR

GIMS

" " GIMS

400 395

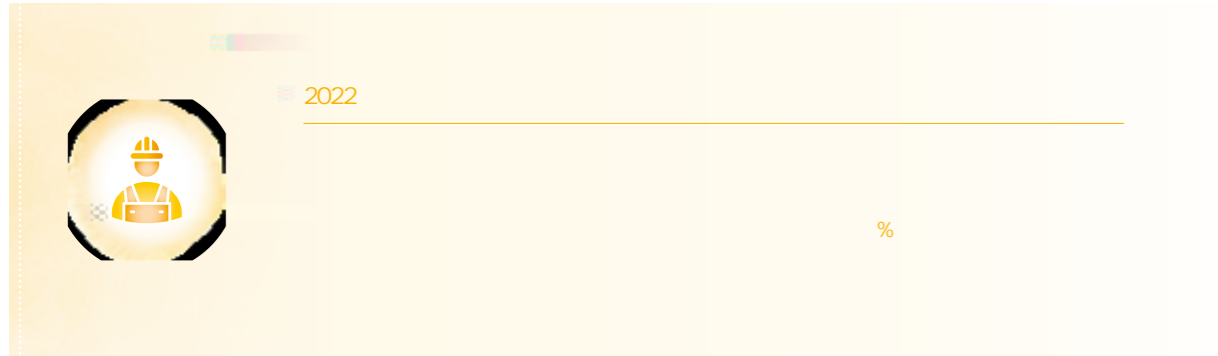
•  
“ ”  
“ ”



“ 1+N”		10	
”		12 31	
“ ”		2,090	
”		9.1	
		312	
		114.4	



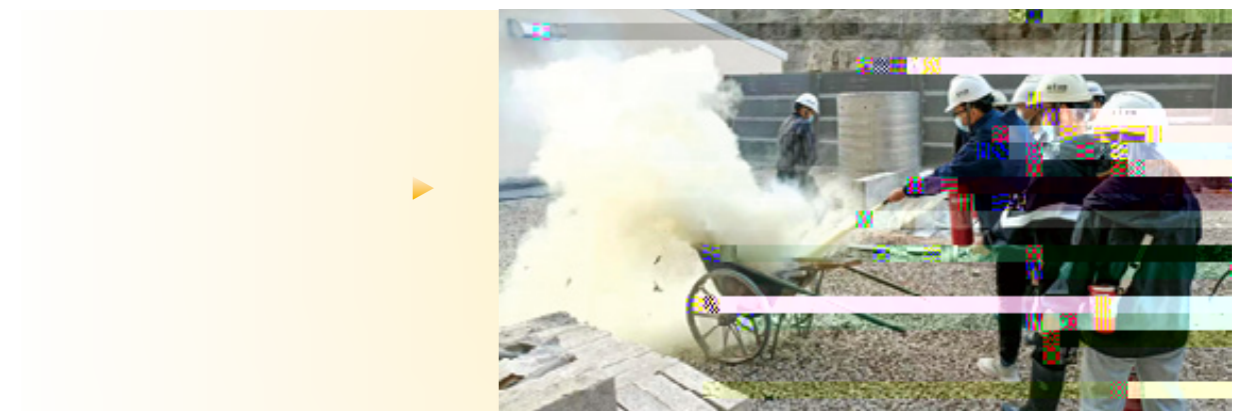
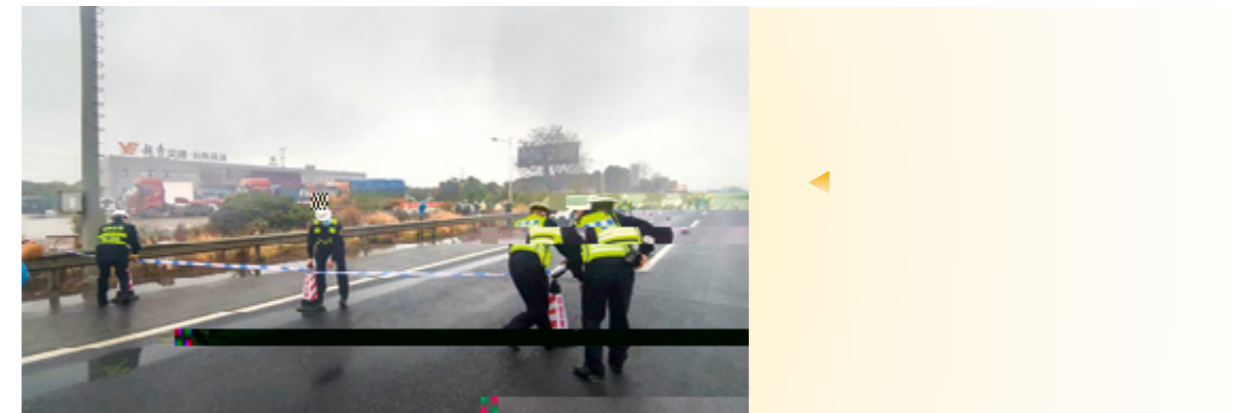
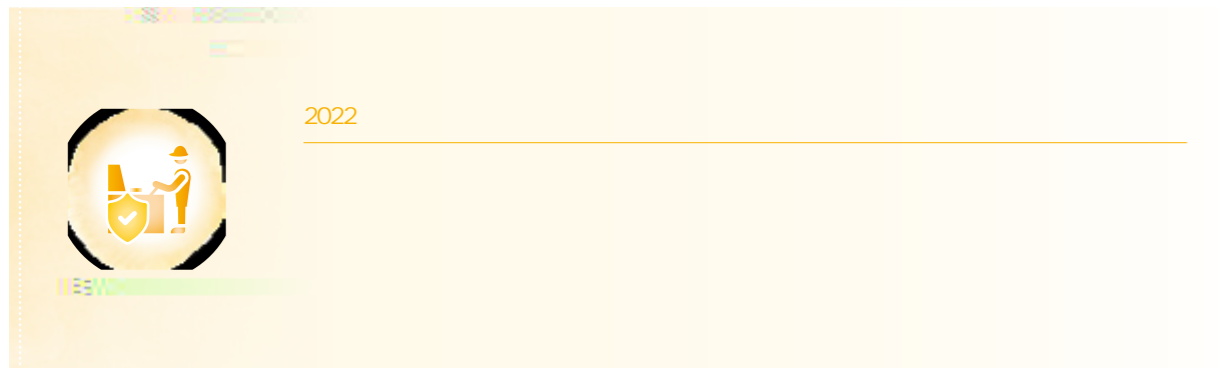


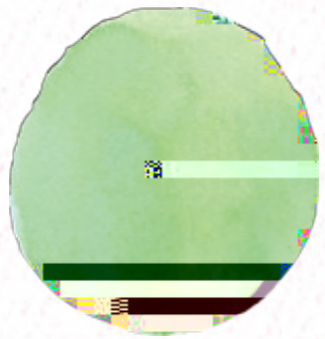


6

4

2022





2030

SDGs

<b>3</b> 良好健康 	<b>6</b> 清洁饮水和卫生设施 	<b>7</b> 经济适用的清洁能源 	<b>9</b> 产业、创新和基础设施 
<b>12</b> 负责任消费和生产 	<b>13</b> 气候行动 		



•

" "

2022

" "

2022 3

100



2022 5

" "

100  
40

2022 7

" 2022

15

70

" 2022



2022

2022 8

" "

2022 9

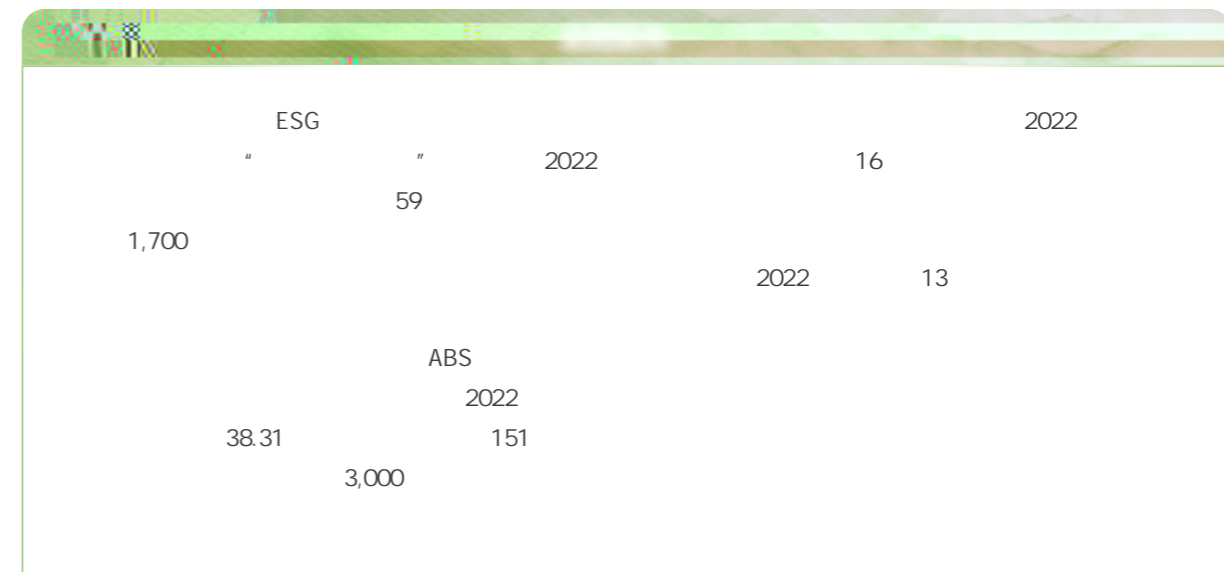
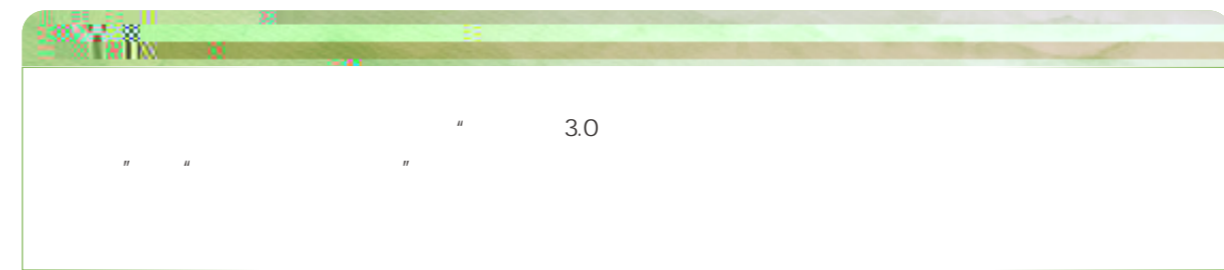
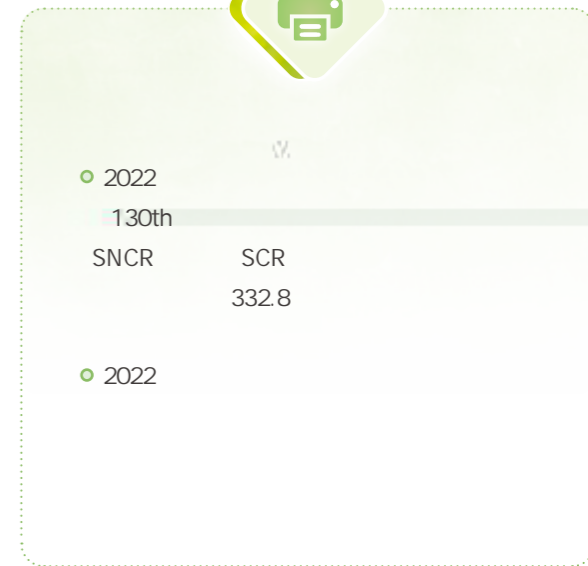
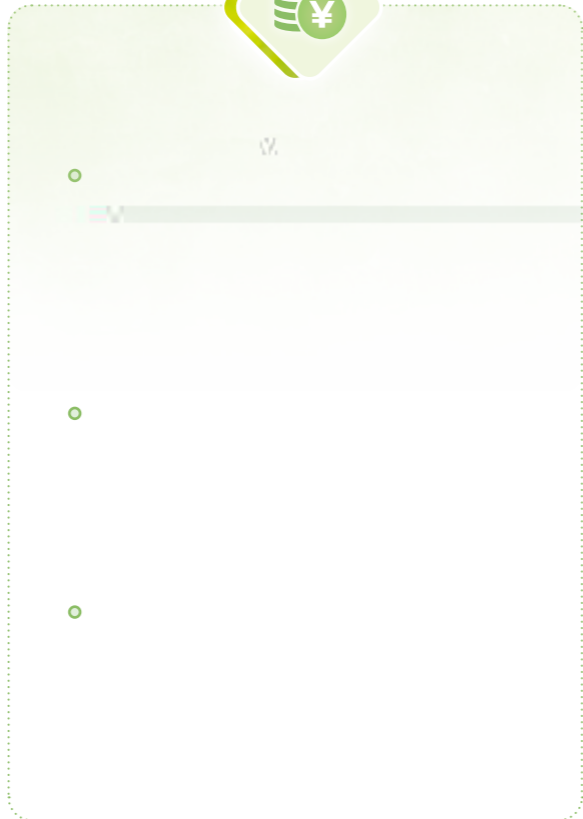


2022 11





•  
 " " "  
 " "

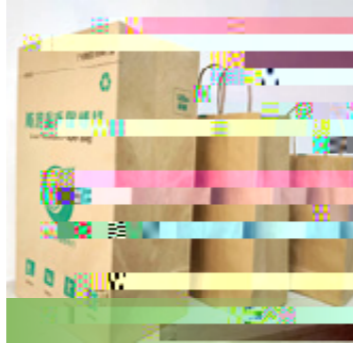




	2022	
	COD	159mg/L
L	133mg/L	
	34mg/L	18mg/L
BOD5	41.6mg/L	
18.3mg/L		
15%		





2022



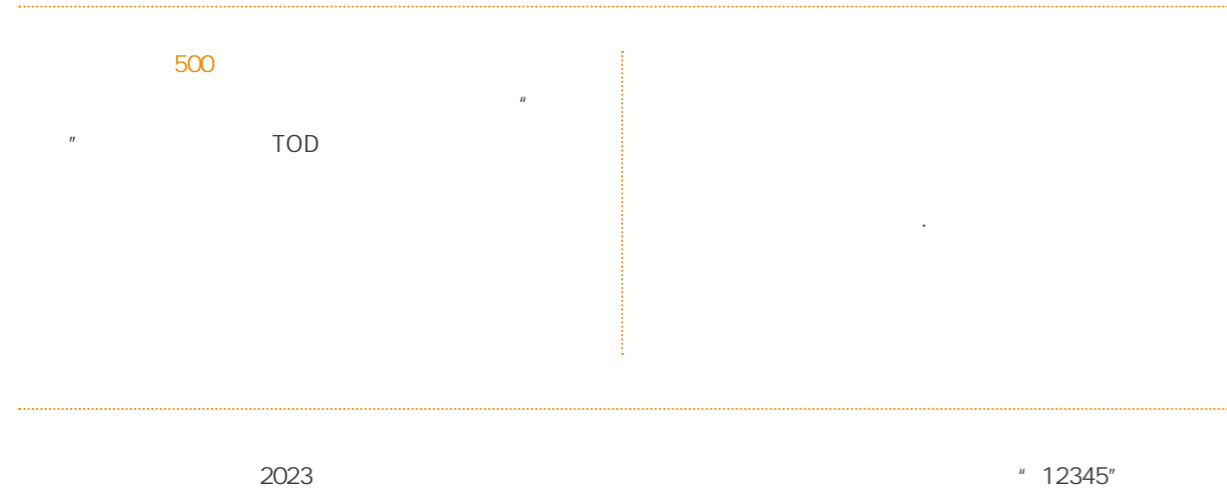
2022




2022

2023



		2020	2021	2022
	%	113.09	112.90	105.97
1		63425	75398	43867
		34	47	46
	%	99.4	99.4	99.4
	%	100	100	100
	%	100	100	100
	%	100	100	100
	%	100	100	100
	%	97	96	98
	%	96.6	95.7	97.0
	%	86.3	85.6	87.0
		13050	26850	18196
		1013	1024	854
		1292	1758	2319
		129	197	217
		226	273	281
	%	56.92	58.00	45.33
	%	73	81	75
	%	58.91	67.00	70.50
		29937	36837	38027
		18620	22832	23807
		11317	14005	14220
		1298	1751	1953
	%	16.7	22.2	23.53
		37	77	39
	%	3.60	4.22	5.42

	2020	2021	2022
	5.67	5.12	5.49
	16912	15525	17866
	/	2022	2164
	1602	1744	1651
	3700	3705	2734
	21.81	37.82	45.53
	48	56	53
	83	54	46
	17.3	16.8	18.7
	28.1	30.7	20.3
	%	100	100
	%	100	100
	%	100	100
	2.2	1.49	1.3
	25931	42148	54489
	%	96	95
	135047	74747	39456
	1654	2723	3705
	42485	63577	80551
	0	0	0
	0	0	0
	0	1	1
	0	0	0
	0	0	0
	967	4238	7647
	254	422	706
	50	100	217
	1277	1091	874
	1236	2400	3236

	2020	2021	2022
2	1439577	1718538	1811959
/	1.26	1.26	0.89
/	29.21	26.93	27.65
/	25.96	32.65	26.59
/	0.11	0.09	0.08
/	3367.93	3024.14	2426.61
	6.05	7.88	9.60
	193	319	362
3	743511	491469	506207
/	52.63	60.54	54.34
/	176	180	156
/	740.35	681.51	528.43
4	198828310	225850287	224679127
5	25825369	25182766	25049949
/	59.38	35.71	25.17
/	423.99	511.21	552.94
/	0.16	0.19	0.09
/	32366	33090	26784
	41564	44988	109175
	0	0	73000
	73478	164379	41502
	2007	5070	6660

- 1. 3
- 2. 3
- 3. 3
- 4. 3
- 5. 3

CASS-CSR4.0	GRI Standards
P1.1-1.3	102-1 102-50 102-51 102-52 102-53
P2.1-2.2	102-14 102-15 102-23
P3.1 P4.1-4.4 G1.1-1.2 G2.1-2.3 G3.1-3.3 G4.1 G5.1 G6.1 M1.2 M1.4 S4.1	102-2 102-3 102-4 102-5 102- 6 102-7 102-16 102-18 102-29 102-31 102-32 102-33 102-34 102-40 102-42 102-44 102-47
P3.2 S1.5 S4.12-4.14	201-1 203-1 203-2
M2.1-2.2 M2.14-2.15 S1.3 S1.5-1.6 S2.1-2.8 S2.10- 2.14 S2.16 S4.2	102-8 201-1 403-1 403-4 403-5 403-6 404-2 405-1
M1.1 M1.5-1.8 M2.11 M2.13 M3.1 M3.3 M3.5 M3.8 M3.11 S1.1-1.2 S1.4 S3.1-3.5	102-9 203-1 203-2 205-2 417-1 418-1
M1.3 M2.4 M3.4 M3.6- 3.7	203-1 203-2 205-2 404-2
S2.17-2.18 S4.6-4.11 E1.1 E1.3 E1.5 E1.7 E1.9 E2.1-2.3 E2.6 E2.8 E2.11 E2.13 E2.15 E2.17 E2.19 E3.1-3.4 E3.6	301-2 301-3 302-5 303-3 304-2 306-2 401-2
A1	103-2
A2 M2.3 M2.5-2.6 M2.16 M2.18	302-1 302-2 302-3 302-4 303-1 305-1 305-2 305-4 305-7 401-1 403-9 404-1
A5	102-55
A4	102-56
A6	



